



 Virat  
Vastu  
Just Perfect Homes  
Just Perfect Homes



# About

*Virat* the name is synonymous with colossal - meaning very big or massive. A lot of hard work, trust, knowledge and performance go into the making of such a creation.

Keeping in sync with this philosophy, Virat Group has developed itself by maintaining quality, design, development and maintenance of Real Estate developments.

As a Real Estate developer Virat has successfully completed and delivered more than 34 projects till date.

Our latest project Virat Vastu is the testimony for the same.

'Vastu' in Sanskrit applies for architecture. The underlying meaning for 'Vastu' being to dwell, stay and abide which implies not only staying in your house but abiding peacefully and prospering in your home.

Virat Vastu presents- 'just perfect homes' amidst exquisite surrounding that offers matchless beauty, peace and harmony to its occupants. Offering lifestyle which had never been experienced before, Virat Vastu brings to you the best of stylish design and layout with an eye for detail.

At a stone's throw away from Ambivali Railway station, amidst lush green surroundings lies Virat Vastu - Where tranquility, greenery and luxury combine to form a home.

Inspired by the overwhelming response of Virat Heights, Virat Residency and Virat Meadows 'Virat Vastu' presents premium yet affordable apartments located with excellent connectivity where you are miles from commotion of the city yet minutes from its comfort.

Easily equitable from essential utilities such as schools, hospital and market, Virat Vastu is a residential complex comprising of 4 -G + 7 storeyed marvels comprising of 126 residential apartments.

Ample recreational facilities for children coupled with soothing landscaped garden puts Virat Vastu a class apart from other projects in the area.

Experience the lifestyle at Virat Vastu and realise your dream....





FUTURE DEVELOPMENT

CHAND  
SHRAN



# Building Type 1



TYPICAL ODD FLOOR PLAN



TYPICAL EVEN FLOOR PLAN



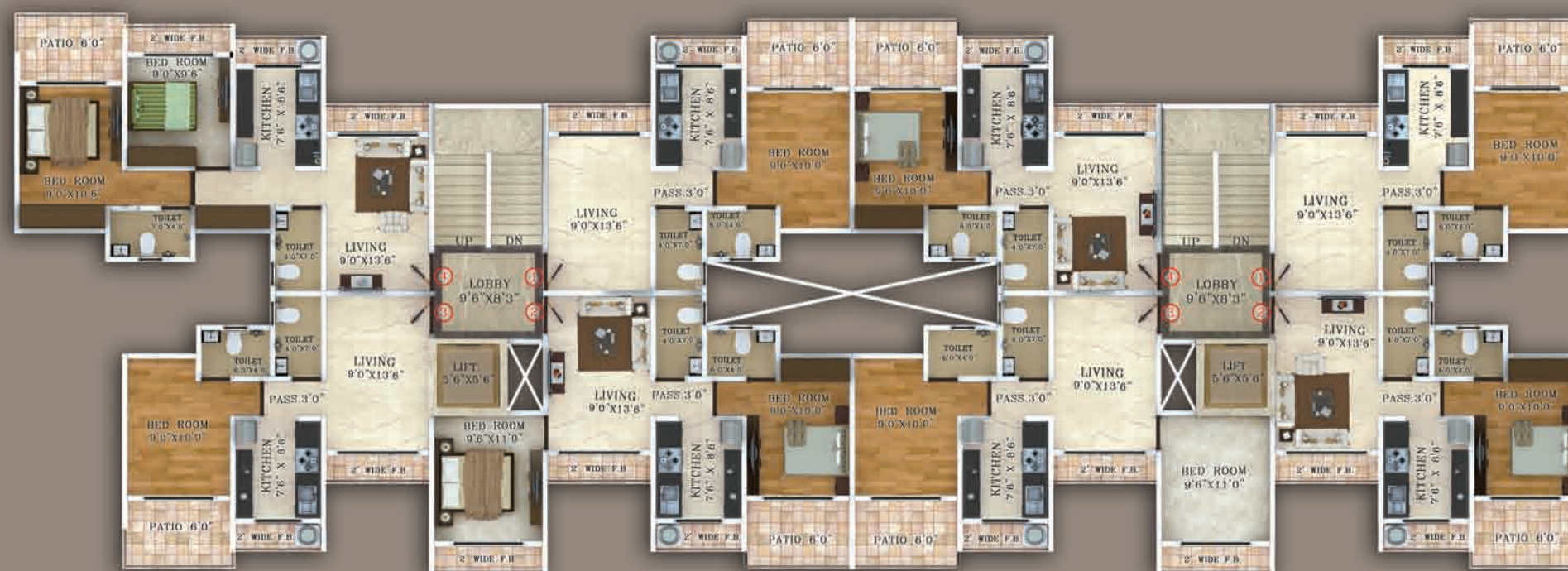




# Building Type 2 & 3



TYPICAL ODD FLOOR PLAN



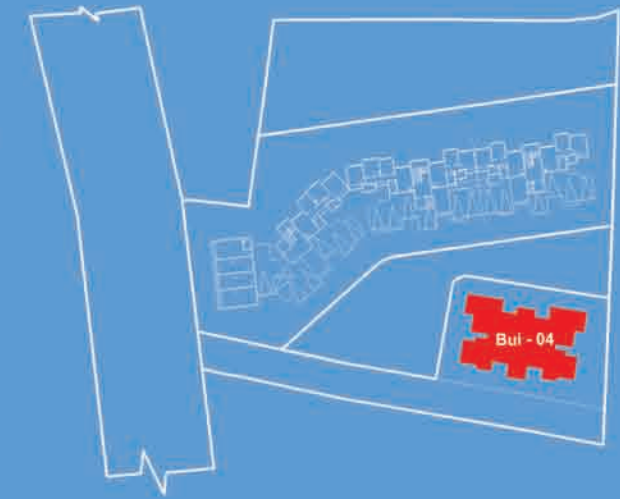
TYPICAL EVEN FLOOR PLAN







# Building Type 4



TYPICAL ODD FLOOR PLAN



TYPICAL EVEN FLOOR PLAN







# 1 Bhk





2 Bhk





# Amenities

## Exterior

- Solar Water Heating System
- Electric Back-up: Power Back-up for all Common Services
- State of Art Fire Fighting Systems
- Weather shield Paint on the exterior walls
- Ample Play Area for Children
- Biggest Landscaped Garden
- Jogging Track
- Ample parking space



Jogging Track



Childers' Play Area



Yoga and Meditation



Solar Water Heating System

## Interior

- Granite Kitchen platform with SS sink
- Flooring: Vitrified Tiles Flooring in all rooms
- Full Dado Ceramic Tiles in Kitchen and Bathroom
- Concealed plumbing with Standard fittings and fixtures
- Concealed Electrical wirings of copper
- Wooden Flush Doors
- Powder coated French Type Aluminum Sliding Windows
- Marble Sill Window Frames





government garden

government garden

Bui-02

Bui-03

Bui-01

Bui-04

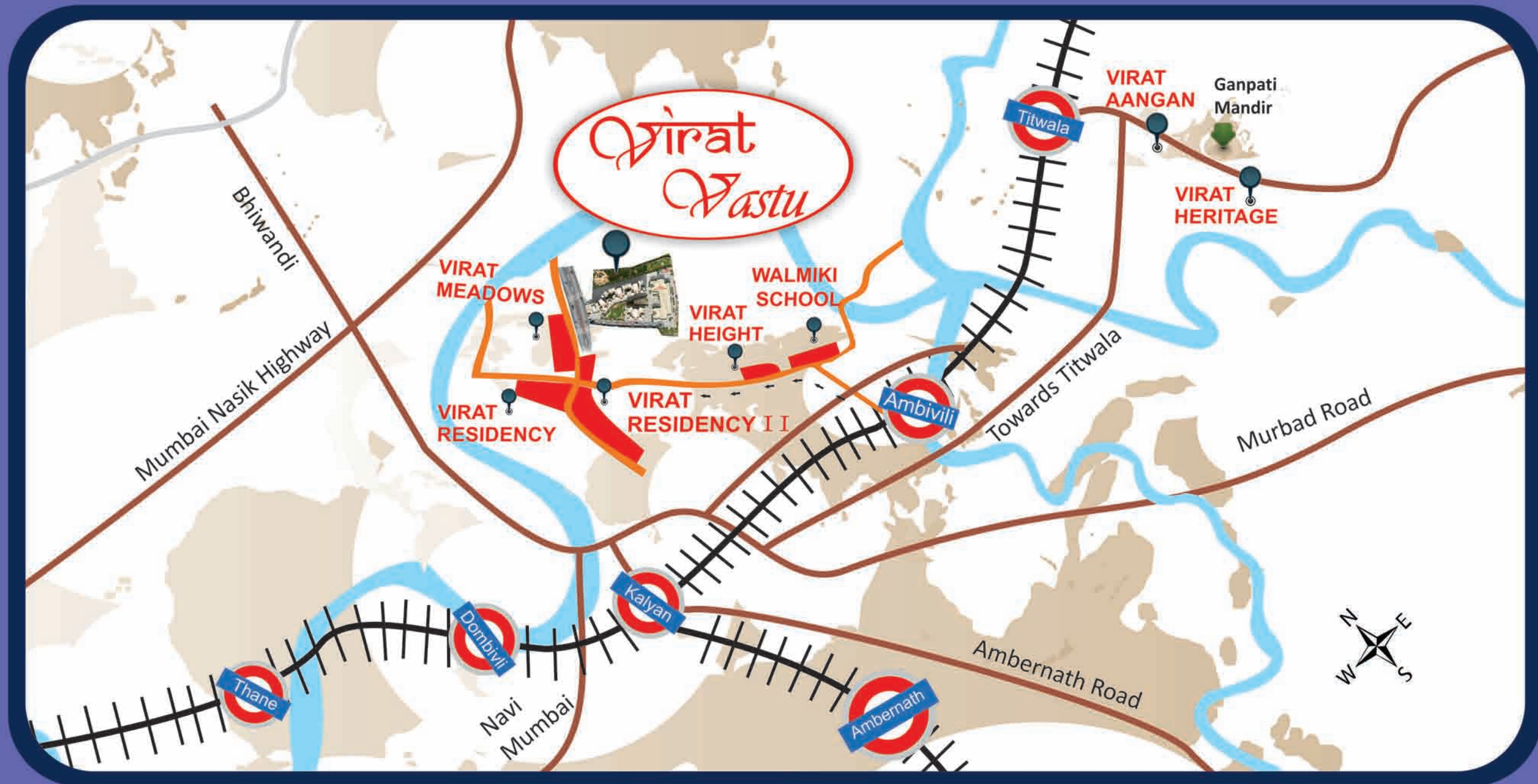
FUTURE  
DEVELOPMENT

6.00 M. W. ROAD

18.00 M. W. D. P. R. O. A. D



# Location Map



Architect  
**CREATIONS**  
 ARCHITECTS & INTERIOR DESIGNERS

Structural Engineer  
**S.V PATEL & ASSOCIATES**  
 MUMBAI

A Project by

**Virat**  
 REAL ESTATE DEVELOPERS

**SHREEJI**  
 GROUP

204, Riddhi Siddhi Apt., Above ING Vyasa Bank, Ramnagar, Dombivli (E.) Tel.: 0251-2863842 , Email: info@viratgroup.in

The plans, specifications, images & other details here in are only indicative & the Developer / Owner reserves the right to change any or all of these in the interest of the development. This material do not constitute an offer and / or contact of any type between the developer / owner and recipients. Any purchaser / lessee of this development shall be governed by terms & conditions of the agreement for sale / lease entered into between the parties and no details mentioned in this material shall in any way govern such transactions.