

*For the illustrious few.*



Aundh



## **The Spires**

### **4 & 5 BHK Ultra Luxurious Home**

For the like-minded and selected few, here comes the towering structure that will redefine the way luxury is perceived - The Spires, exquisite residential apartments & pent houses in Aundh, Pune.

The high rise figure, boasting of 4 & 5 BHK palatial homes, exudes class from every realm with its ultra premium amenities and specifications. Reflecting the true aristocratic lifestyle, these 18 storey Twin Towers are for the ones who have a taste of luxury. Get besotted as The Spires charms its way through to your heart.

This is, what one calls, a connoisseur's delight.

# Layout





## Common Amenities and Features

- Party Lawn with Barbeque Area
- Partially covered 65 ft. length Swimming Pool with a separate Kids' Pool and Jacuzzi
- Children's Play Area and Multipurpose court
- Driver's dormitory with staff toilets in stilt parking
- Provision of more than 3 car parks per apartment with additional guest parking
- Basement height to allow mechanical parking
- Private elevators with Access Card security opening in apartment lobby
- CCTV monitoring of common areas & perimeter security to entire gated community
- Magnificently designed double-height Air Conditioned Sky Lounge with Pool Table, Card Tables and Massage Chair for each tower
- Fully equipped, state-of-the-art Club House with Air Conditioned Gym, Yoga/Aerobic hall, and Massage Room with Steam & Shower
- 100% power back up for common areas
- Stretcher Lift in each building

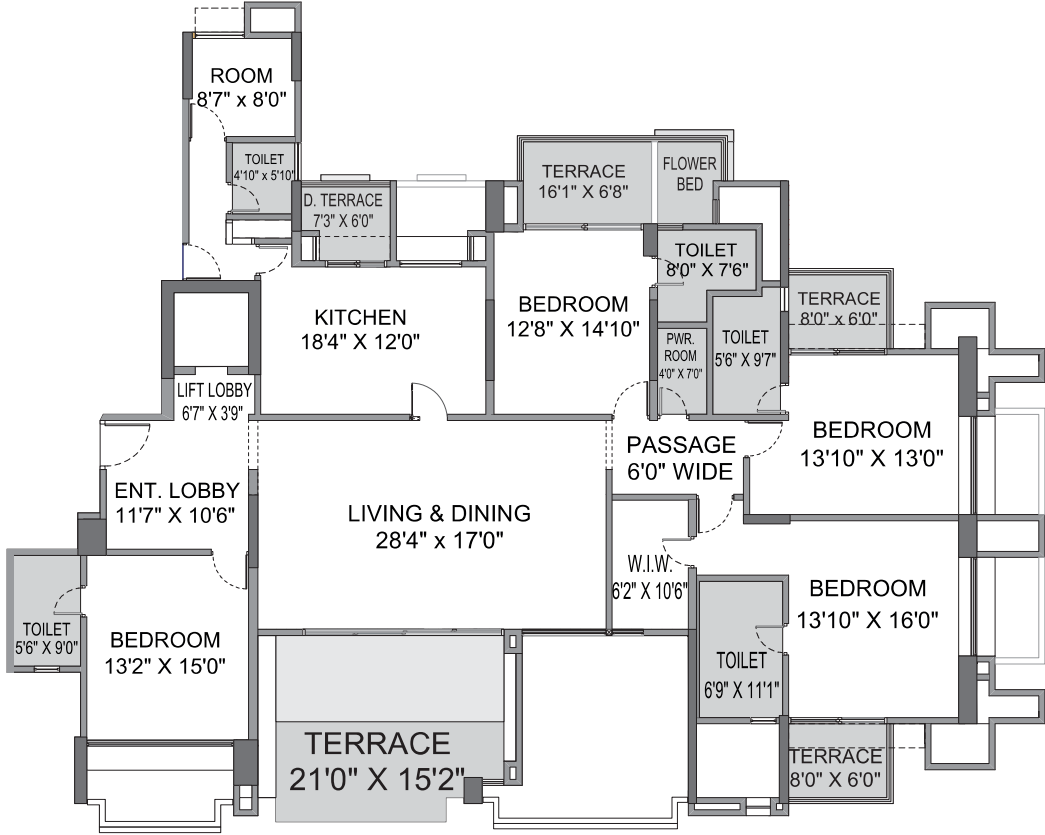




## Specifications

- Imported Marble in Living, Dining and Family Room
- Wooden Flooring in Children's and Master bedroom
- Branded Modular Kitchen with Hob, Chimney and reticulated Gas Connection
- Servant room with toilet to every apartment
- Glass Shower Partitions
- Hansgrohe/Kohler/Jaquar - Artize series or equivalent CP Fittings & Sanitary Ware
- High speed wi-fi internet in entire flat
- Legrand/Schneider or equivalent Modular Switches
- Home automation for lighting & curtains in Living & all Bed Rooms
- Melamine/PU coat finished internal doors with wooden frames
- Video Door Phones
- Yale Digital Rim Locks in each apartment
- Smoke detector in Kitchen & Sprinkler system for entire apartment

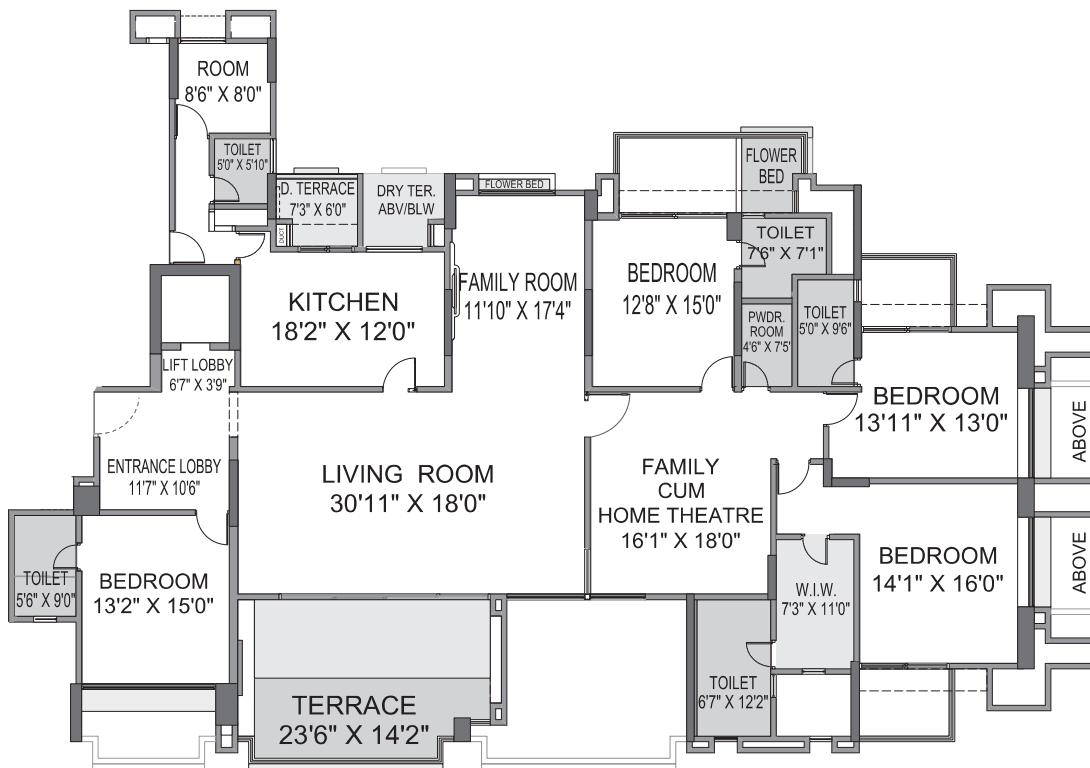
A & B Building  
4 BHK Plan



| 4 BHK   | SQ.FT | SQ.MTRS. |
|---------|-------|----------|
| CARPET  | 2827  | 262.63   |
| SALABLE | 3817  | 354.6    |

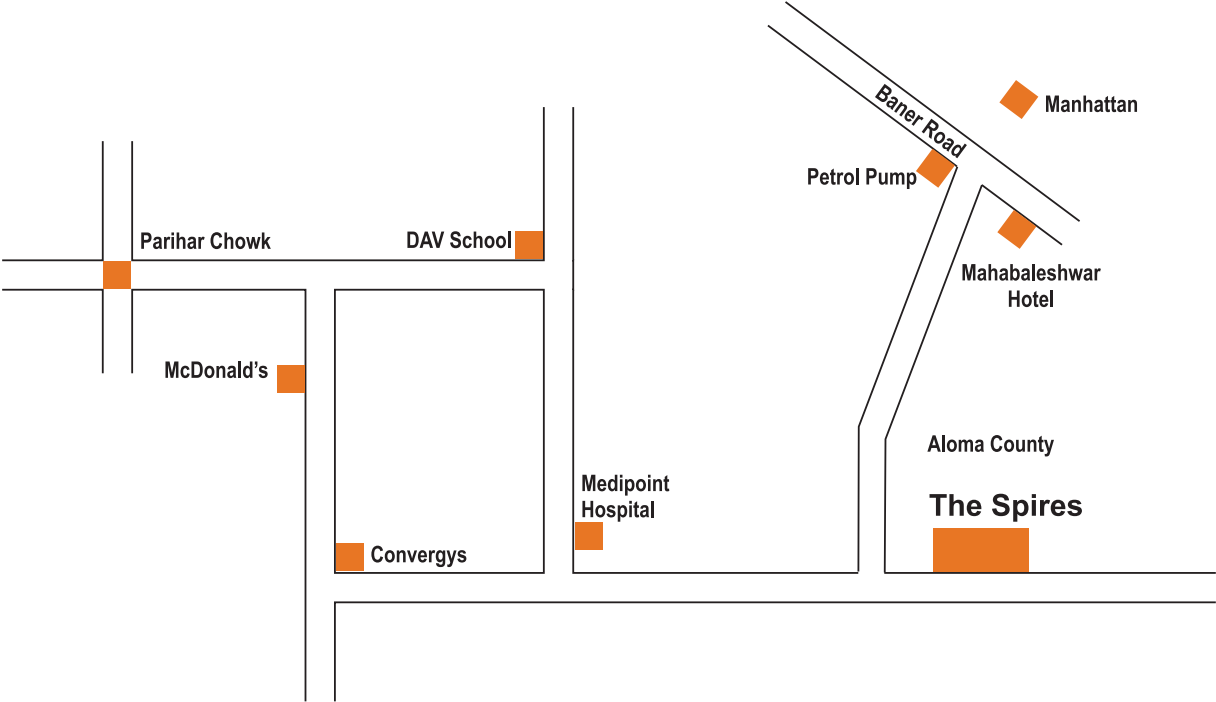
# A & B Building

## 5 BHK Plan



| 5 BHK   | SQ.FT | SQ.MTRS. |
|---------|-------|----------|
| CARPET  | 3394  | 315.31   |
| SALABLE | 4582  | 425.67   |

LOCATION MAP





## **CREDITS**

- **Architect :**

Abhikalpan Architects and Planners, Pune

- **Landscape Architect :**

Site Concepts International, Singapore

- **Consulting, Liaison Architects, Structural Designs/Electrical :**

Naiknavare Developers Pvt. Ltd, Pune

- **Plumbing Consultant :**

Ace Consultants, Pune

- **Construction & Property Management :**

Naiknavare Pride AOP, Pune

- **Interior Design :**

Sanjay Puri Architects Pvt. Ltd, Mumbai

- **Air Conditioning & Ventilation :**

Albus Engineering Consultant Pvt. Ltd, Pune

- **Environmental Clearance :**

Ultra Tech Environmental Consultancy & Laboratory, Pune

- **Digital Displays :**

Frontop Digital Technology Co. Ltd, China, Pixel Image (India) Pvt. Ltd, Pune

A Project By



**Site:** S. No. 221 to 223 (Part), Behind Medipoint Hospital, Baner, Pune - 411 045.  
Phone: +91-95615 80000 / 6401 3000 | [www.thespires.in](http://www.thespires.in)

**Corporate Office:** Pride Purple Group, 5<sup>th</sup> Floor, Pride House,  
University Road, Pune-16 • Tel: 020-66319100/01

