

A PROJECT BY



ARCHITECT



Office Address: 225, Second floor, Big Splash, Plot No. 78 & 79, Sector 17, Vashi, Navi Mumbai- 400 705 | **Tel:** +91-22-2788 9991-98 | **Fax:** +91-22-2788 9982
Email: info@akshardevelopers.com | www.akshardevelopers.com

Site Address: Gut No. 242, Near Patni Computers, Thane Belapur Road, Airoli, Navi Mumbai.

Note: All specifications, drawings, amenities, facilities, parameters, etc., shown in this brochure are subject to change as per the approval from the respective authorities. The final discretion remains with the developers.

thoughttrains.com

THE FRESHER SIDE OF LIFE



Live life fresh
Airoli, Navi Mumbai





LIVE WHERE FRESHNESS IS AT ITS BEST

Enwrapped in the beautiful lush green nature, life here is refreshingly brilliant. This world offers you the best of green living which helps the environment, helps your health and makes you feel better. Experience a beautiful life with the best of conveniences, comforts and necessities at Green World.



STEP INTO THE WORLD OF FRESHNESS



Live life fresh

Airoli, Navi Mumbai

1 ½, 2, 2 ½ & 3 BHK premium apartments

Artist's Impression

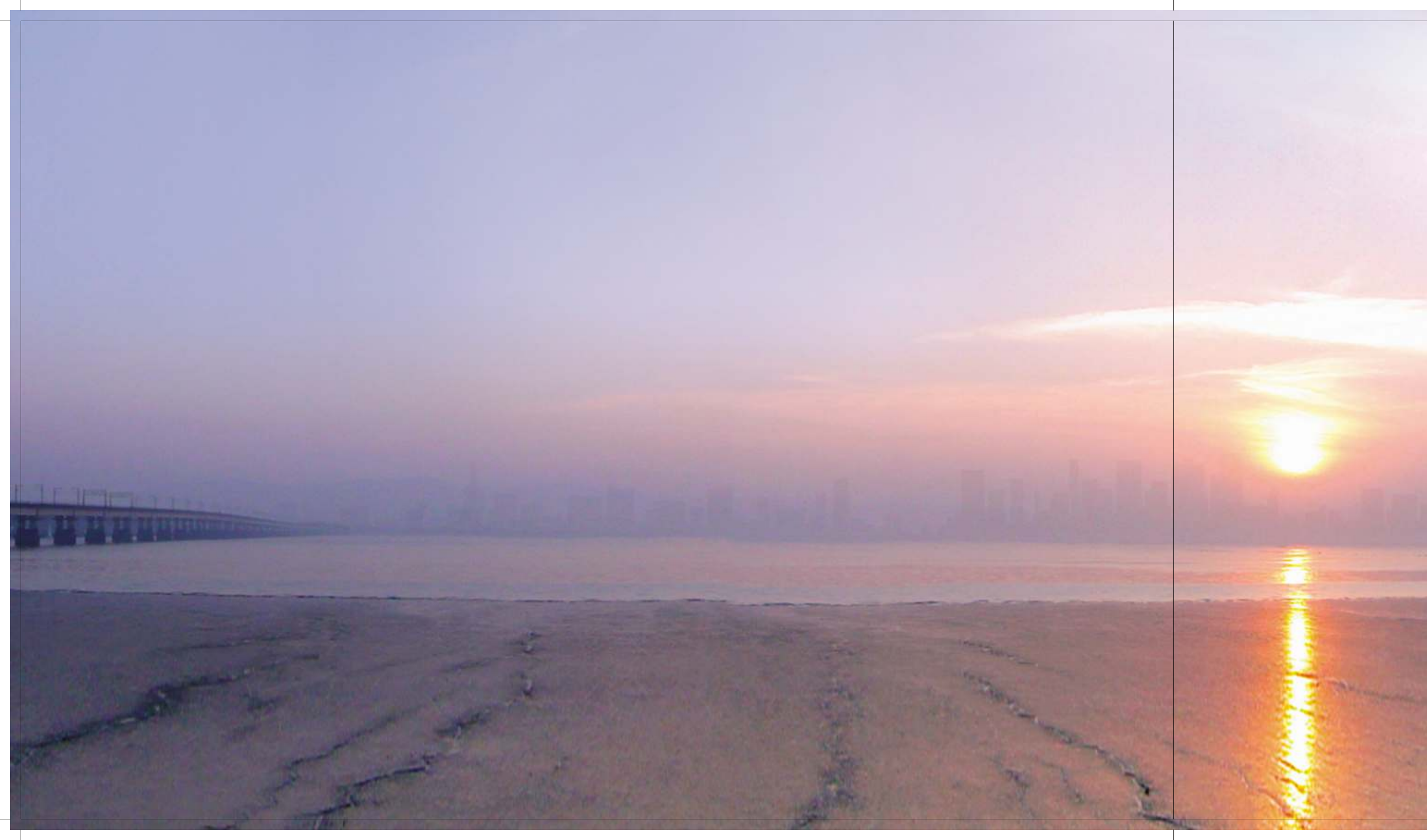
MEET THE LIFESTYLE OF THE FUTURE. MEET THE GREEN WORLD.

Experience the fresher side of life where your lifestyle meets the nature and future at one place. Sprawled amidst the green expanse of 1, 15,000 sq.ft. on podium, Green World offers spacious, luxurious and comfortable apartments at Airoli, Navi Mumbai. So just step in and discover the epitome of impeccable design & modern amenities graced by fabulous views and fresh air to cherish the green living at its best. Welcome to Green World.

Project hallmarks

- 11 majestic towers of 22 storeys each
- 1 ½, 2, 2 ½ & 3 BHK premium apartments
- 1,15,000 sq.ft. of Wi-Fi enabled podium landscaping
- Ultramodern clubhouse with health, recreation and wellness features
- Advanced security system with CCTV surveillance
- Adorned with world-class eco-friendly features
- Situated close to Airoli Railway Station
- In close proximity to schools, colleges, hospitals, restaurants & banks





LIVE LIFE IN THE WELL- PLANNED METRO - NAVI MUMBAI

Navi Mumbai has been developed as a planned city and a counter-magnet for Mumbai. It has been developed as an independent, fully self-contained metro city. Navi Mumbai has been planned and developed by City and Industrial Development Corporation of Maharashtra (CIDCO) to meet the infrastructure needs of a modern metropolis. Apart from the well-developed transport services, Navi Mumbai Municipal Corporation (NMMC) operates a huge network of public buses for all. MIDC has played a vital role in the development of this city by successfully developing Airoli Knowledge Park and Millennium Business Park.

- Well connected to Mumbai & Thane by rail and road
- Navi Mumbai International Airport in progress
- Excellent motoring conditions with well planned flyovers, broad roads and parking lots
- Proposed hovercraft services from Vashi, Belapur, Nerul & Airoli to Gateway of India
- Famous shopping malls such as Centre One, Raghu Leela, Palm Beach Galleria, Citi Center and Inorbit
- All leading banks have branches throughout Navi Mumbai
- Largest fresh fruits & vegetable market in Vashi (APMC)
- Major business hubs in CBD Belapur, Vashi, Nerul, Mahape & Airoli
- Prominent business landmark - Jawaharlal Nehru Port in Nhava Sheva
- DY Patil International Cricket Stadium located at Nerul

THE FLOURISHING HUB - AIROLI

Airoli is considered as one of the most desired and most flourishing residential heaven of Navi Mumbai. Due to its precise planning, favourable geographical construct, superb connectivity and various location advantages, Airoli has acquired a reputa of being called as Navi Mumbai's best location.

Airoli is a well-developed residential as well as commercial hub, making it the fifth most developed suburb of Navi Mumbai. It is well-connected to Navi Mumbai's other developed neighbourhood Vashi with city bus services provided by BEST, NMMT and local train services.

The Mulund-Airoli Bridge has highly contributed to Airoli's rapid expansion in recent years. The International Diplomatic Enclave (IDE) has been planned and developed by CIDCO to provide a high security enclave for various countries to establish their consulates in Airoli so as to provide trade, travel and visa facility to residents of MMR (Mumbai Metropolitan Region). Airoli is also the address for reputed commercial parks such as Times of India city, iGate Knowledge Park, Reliable Tech Park and Mindspace.



NMMT Bus Service



Corporate Parks



Airoli-Mulund Bridge



State-of-the-art Railway Station

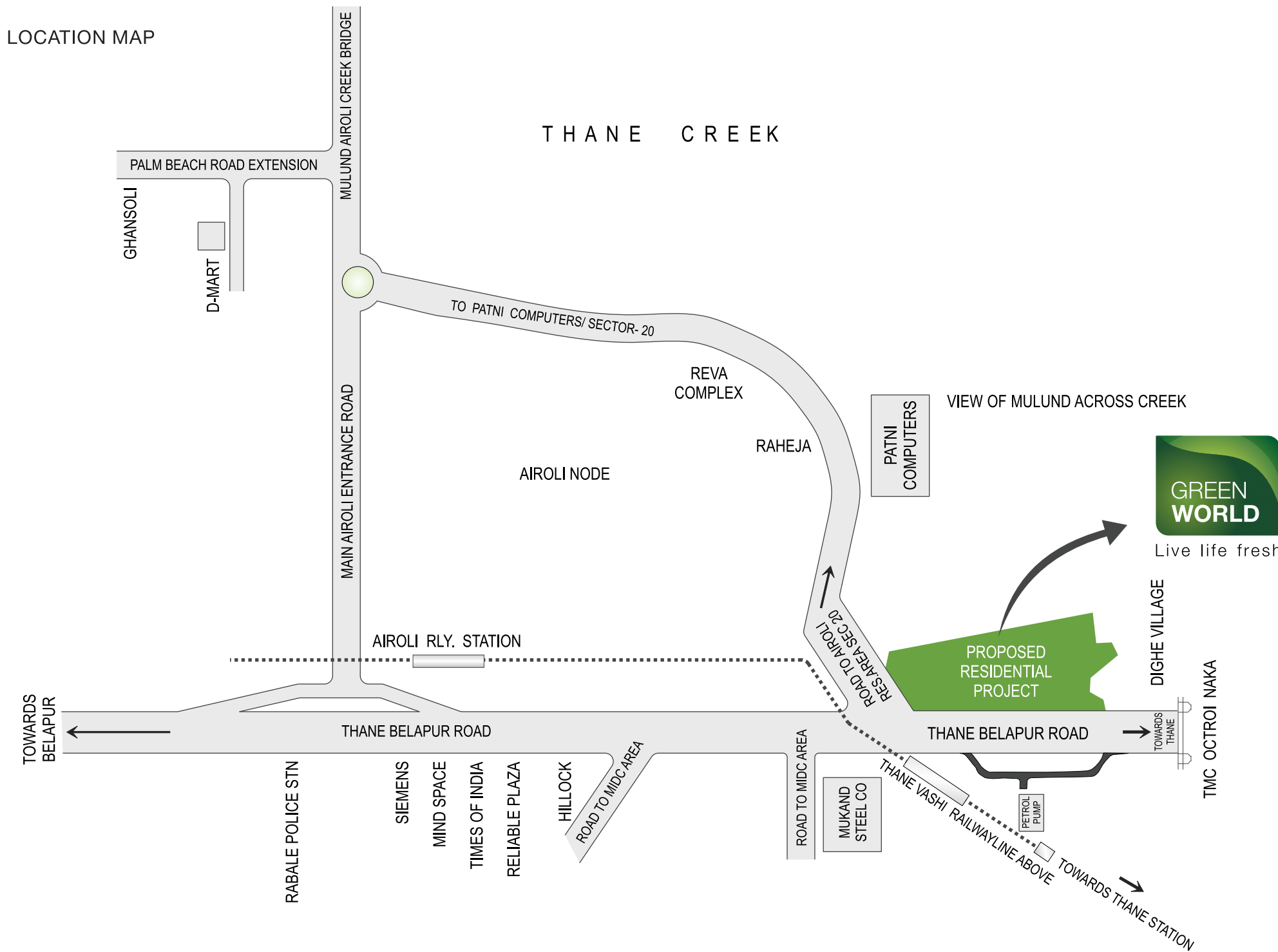


Top Colleges with IBC curriculum



International Schools with ICSE, CBSE curriculum

LOCATION MAP



REFRESHING NEIGHBOURHOOD. UNLIMITED CONVENIENCES.

Green World has emerged as a strong contender today, thanks largely to its locational advantages.



- On Thane-Belapur road



- 10 min from Eastern Expressway Highway
- 30 mins from proposed International Airport



- 5 min from Airoli Railway Station
- 20 min drive from Thane Station
- In close proximity to Proposed Dighe Railway Station



- In close proximity to schools, colleges, hospitals, restaurants & financial institutions



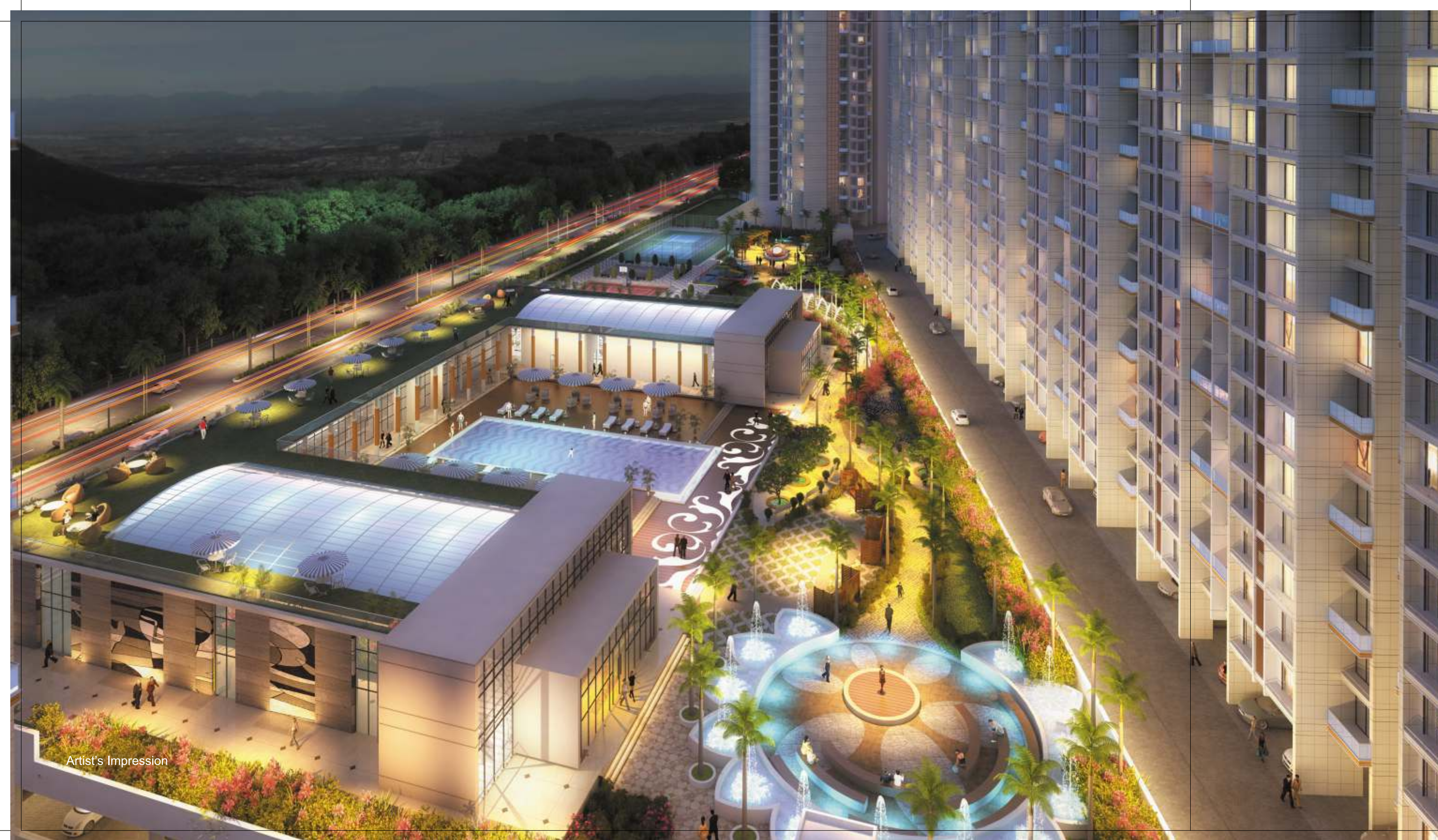
- 5 min from Chhatrapati Shivaji Hospital
- 15 min from Fortis Hospitals



- Close to commercial parks such as iGate, Hindustan Times, Times of India, Hindustan Unilever Limited, Mindspace



Live life fresh



Artist's Impression

LIVE WHERE FRESHNESS IS ENABLED WITH TECHNOLOGY

NAVI MUMBAI'S FIRST 1,15,000 SQ.FT. OF LUSH GREEN
WI-FI ENABLED PODIUM LIFESTYLE.

A SPREAD OF FRESHNESS

SURROUDING HAPPINESS IN DETAILS

- | | | |
|---------------------------|------------------------|-------------------------------|
| 01- Amphitheatre Seatings | 10- Tennis Court | 19- Creche |
| 02- Jogging Track | 11- Box-Cricket | 20- Carrom |
| 03- Lawn | 12- Multipurpose Court | 21- Kitchen |
| 04- Hardscape Benches | 13- Library | 22- Banquet |
| 05- Pebbels Park Area | 14- Gym | 23- Pool Deck |
| 06- Arc Pergolas | 15- Cafeteria | 24- Swimming Pool |
| 07- Senior's Area | 16- Card Room | 25- Club Entrance Lobby |
| 08- Waterbody Bubbles | 17- T.T | 26- Spa, Steam & Massage Room |
| 09- Kid's Area | 18- Pool | |

Note: The size and shape of swimming pool may vary. All the rights reserved with developers.



FIRST-OF-ITS-KIND WI-FI ENABLED
GREEN LANDSCAPING



Come home to a world full of lush greenery and lavish lifestyle. With Wi-Fi enabled podium at Green World, you can enjoy net surfing while sitting & relaxing in this zone. Now experience the best of technology with best of nature, all at the same time.

LANDSCAPED GARDEN WITH
JOGGING TRACK



This well-laid landscaped garden with jogging track at Green World is beautifully placed amidst the freshness of the landscaped greenery. Now jog or walk to gift yourself a healthy routine here.

MULTIPURPOSE COURTS



Participate in this healthful activity with your friends and family at Green World. These courts offer a well-equipped lawn to give you a wonderful opportunity of playing your favourite game that encourages the spirit of winning.

CHILDREN'S PLAY AREA



Green World boasts of a wonderful play area for your little ones. Designed with care and safety precautions, this area is the most happening place for kids.

AMPHITHEATRE FOR COMMUNITY ACTIVITIES



At your very own community amphitheatre, you can take part in social activities with others and relive the spirit of togetherness. This place gives you a chance to recreate the magic of performing live.

PARTY LAWN WITH DESIGNER FLOWERBEDS



When it comes to special occasions and parties, the party lawn at Green World is a delight. The greenery attached to the lawn creates a great atmosphere for any occasion.

SENIOR CITIZEN'S PARK WITH SIT-OUTS



The elaborated park and sit outs on the podium level is created to sit, relax and relish the beautiful environment here. Your elders can regularly join their friends or come here for a break.

YOGA & MEDITATION DECK



Green World provides you with a well-thought Yoga & Meditation area in a peaceful setting. Experience the best of yoga here for a stronger body, calm mind and peaceful heart.



Artist's Impression

LIVE WHERE PEACE, HEALTH AND WELLNESS LIVES

FULL-FLEDGED CLUBHOUSE WITH HEALTH, RECREATION
& WELLNESS FEATURES

SWIMMING POOL



A grand pool with kids section gives you a complete refreshing retreat. Here, you can spend some good time with your family and friends. So boost your stamina and flexibility at the pool to rediscover the freshness & relaxation.

INDOOR POOL



A complete separately covered swimming pool, gives the freedom & much needed privacy for everyone to get a thrill out of this refreshing sport. Let the residents enjoy a private swim, stay healthy and rejuvenated.

GYMNASIUM WITH STEAM



The health club at Green World consists of a modern gymnasium with steam. Hit the gym to stay fit with all sorts of modern equipment here. The steam provides you with ultimate relaxation and cools your body down after a workout.

BANQUET HALL



Discover the fresh world of fun, happiness & togetherness at the banquet hall of the Green World. Attached to the party lawn, the banquet hall is the perfect venue to arrange your parties & get together in a luxurious way. Now invite your friends and let your party become the most memorable one.

WELL-STOCKED LIBRARY



Green World provides you with a peaceful and comfortable destination for reading pleasure. You can sit for long hours at ease with this well-designed library.

CAFETERIA



Indulge in the modern way of refreshment in a cafeteria exclusively made for you. At Green World, have the moments of fun & togetherness over a cup of coffee and let the happiness find a cosy corner for you.

CHILDREN'S ACTIVITY ROOM

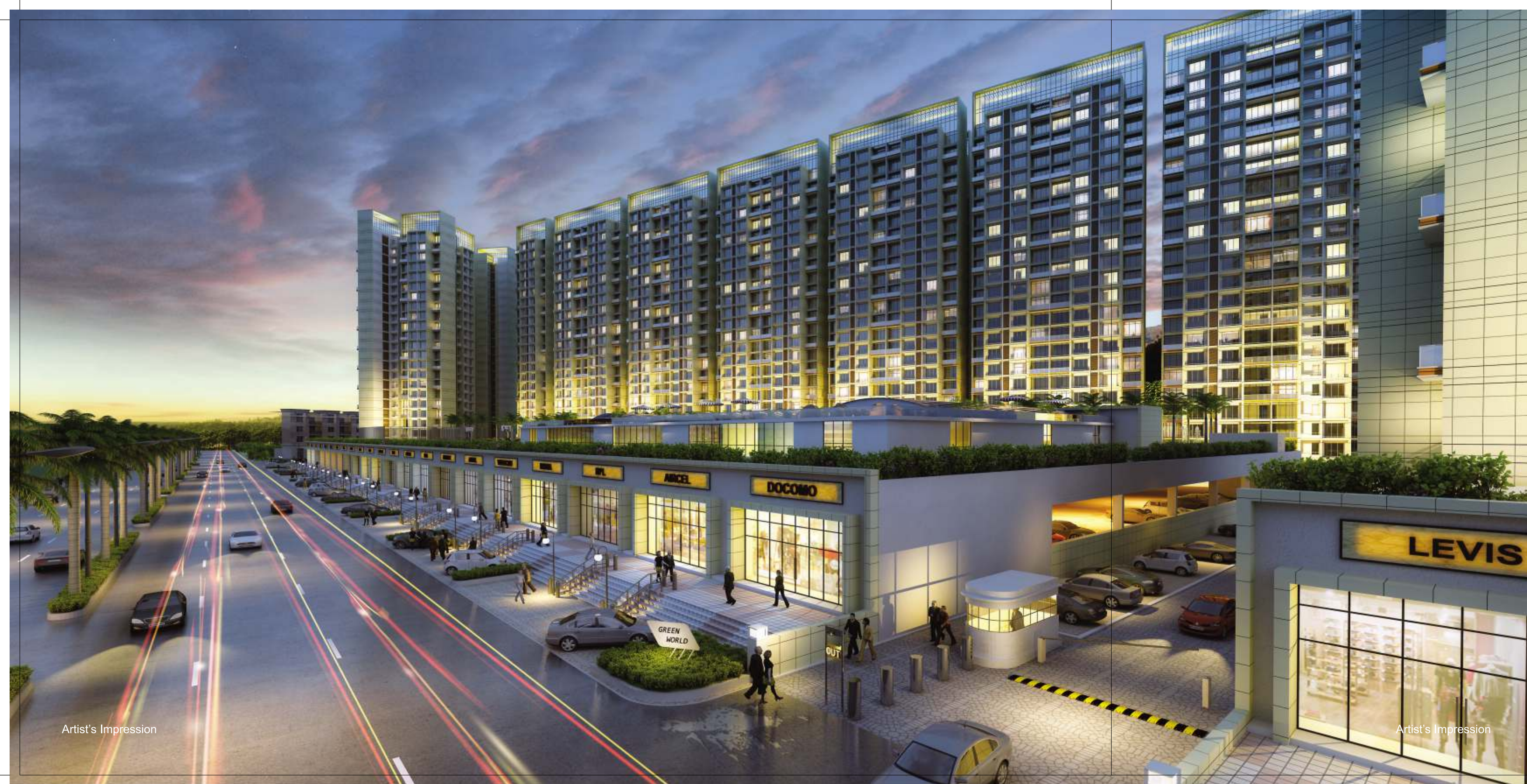


This full-fledged children's game room comes with a package of fantastic games and activities for your kids. Give them an opportunity to make the best of their recreation time here.

INDOOR GAMES ROOM



A plethora of indoor games are waiting for you at the Green World. Explore a place with a number of exciting games that will provide you sheer pleasure and fun to keep you in high spirits.



LIVE WHERE ELEGANCE RESIDES WITH YOU

APARTMENT FEATURES

GRAND LIVING ROOM WITH TERRACE



Every living room at Green World is designed to command stunning views. With avant-garde design flooring and an open terrace, this room is a fantastic eye-opener to everyone who enters. With enormous space you can personalise it as per your needs.

SPACIOUS BEDROOMS



Discover the true meaning of freshness and relaxation at the bedroom of Green World. Find a space of peace and happiness where your dreams experience a happy realisation. Now, let your life enjoy its cosy destination.

DESIGNER KITCHEN WITH GRANITE PLATFORM



Specially designed for your fine taste, this top-notch kitchen with finest platform and voluminous stainless steel sink helps you manage space and maintain hygiene. It's time to cook up some unforgettable stories.

BATHROOMS WITH WORLD-CLASS SANITARY WARE



Experience the best of freshness with superior sanitary wares in your bathrooms at Green World. Indulge in sheer pleasure of chic relaxation here and find your personal zone of freshness at your home.



LIVE WHERE ENVIRONMENT IS YOUR FRIEND

ECO-FRIENDLY FEATURES

CLEAN & POLLUTION FREE
NEIGHBOURHOOD



Green World offers a clean and pollution free environment to all the residents. You can live a healthy life here.

RAINWATER HARVESTING



Green World uses methods for rainwater harvesting and other water conservation techniques to save this great resource.

ENERGY EFFICIENT APPLIANCES
AND LIGHT BULBS IN COMMON AREAS



There are many ways in which Green World conserves energy and resources in the complex. Usage of energy saving bulbs and appliances makes this world look more fresh and conscious towards the environment.

PROVISION OF
SEWAGE TREATMENT PLANT



As a global community we need to re-think the way we dispose sewage and waste water. For this purpose, Green World offers a standardised sewage treatment plant to reduce lifetime costs and create a sustainable environment.

NECESSITIES AT YOUR DOORSTEP

DAILY NEEDS AND PROVISIONS

Discover a fresh world of luxury & opulence which offers your daily necessities at your doorstep. Providing a plethora of retail, medical and lifestyle facilities attached to your home Green World is surely the most promising world to live in. With an ease to shop, it also provides an opportunity to the residents who want to open their retail store, a boutique or practice their profession very close to their home. Enjoy the experience of being at Green World.



SUPERMARKET



BEAUTY SPA & SALON



SHOWROOMS



ELECTRICALS & HARDWARE



CLINICS



FAST FOOD CENTRES



BOUTIQUES



MEDICAL STORE



RESTAURANTS

AT A GLANCE

PROJECT HALLMARKS

- 11 majestic towers of 22 storeys each
- 1 ½, 2, 2 ½ & 3 BHK premium apartments
- 1,15,000 sq.ft. of Wi-Fi enabled podium landscaping
- Ultramodern clubhouse with health, recreation and wellness features
- Advanced security system with CCTV surveillance
- Adorned with world-class eco-friendly features
- Situated close to Airoli Railway Station
- In close proximity to schools, colleges, hospitals, restaurants & banks

ECO-FRIENDLY FEATURES

- Clean & Pollution Free Neighbourhood
- Rainwater Harvesting
- Provision of Sewage Treatment Plant
- Energy Efficient Appliances and Light Bulbs in Common Areas

LAVISH PODIUM FEATURES

- First-of-its-kind WI-Fi Enabled Green Landscaping
- Landscaped Garden with Jogging Track
- Multipurpose Courts
- Children's Play Area
- Amphitheatre for Community Activities
- Party Lawn with Designer Flowerbeds
- Senior Citizen's Park with Sit-outs
- Yoga & Meditation Deck

DAILY NECESSITIES & PROVISIONS

- | | | |
|--------------------------|---------------------|------------------------|
| • Supermarket | • Clinics | • Small Offices |
| • Electricals & Hardware | • Medical Store | • Showrooms |
| • Boutiques | • Restaurants | • Clothing |
| • Beauty Spa & Salon | • Fast Food Centres | • Mechanical & Repairs |

ULTRAMODERN CLUBHOUSE FEATURES

- Swimming Pool
- Indoor Pool
- Gymnasium with Steam
- Banquet Hall
- Well-stocked Library
- Cafeteria
- Children's Activity Room
- Indoor Games with Snooker, Table-tennis & Carrom

INTERNAL FEATURES

Flooring

- Vitrified (marbonite) flooring

Kitchen

- Granite kitchen platform with service platform
- Branded stainless steel sink
- Modular kitchen with full-height glazed tiles

Toilets

- Full-height glazed wall tiles
- Premium fittings
- Provision for hot geyser in all attached bathrooms
- Provision for exhaust fans, non-wood FRP doors, concealed plumbing

Doors & Windows

- Panelled main door
- Internal doors - commercial veneer finished flush doors
- Coated aluminium sliding with glass
- One panel of mosquito preventive net in all windows

Walls & Paint

- Paints of premium quality on interior walls

Electrification

- Concealed copper wiring
- Adequate points and modular switches
- Circuit breaker ELCB

Plumbing

- Concealed piping system in kitchen and all toilets
- First quality C.P. fittings

Security

- Intercom system for all flats with round-the-clock security

Disclaimer: All the above amenities & features presented here are indicative & suggestive. Developer has the right to change, alter and omit the features from the project.

THE MAKERS



At Akshar Group, we believe, inspiration is the driving force behind every single goal we set, every single achievement we attain, and behind every invention known to mankind. Over the years, we have been led to believe that leaders are those who stride forward with the highest form of integrity, unflinching honesty, and a strong inspiration. We believe, the source of our inspiration is life. A single-minded belief that has made us what we are today. One strong belief that has transformed seamlessly and has manifested itself into luxurious and value-added projects, ultra-modern townships, advanced business centres and several other futuristic enterprises, all enriched with rich experiences. For you. Your life.

www.akshardevelopers.com