



Site : Behind Sharda Nagar, Lambakheda, Bairasia Road, Bhopal.

call : 8817222783, 8223841666, 8223851666, 8223861666, 8224007141 / 42 / 43 / 44 / 45 / 46



Office : Plot No. 5, IInd Floor, Bank Street, Zone-II, M.P. Nagar, Bhopal - 11. Ph.: 0755 4700410, 4700411

E-mail : hfmhbhopal@yahoo.com, Website : www.shriparasnathbuilders.com

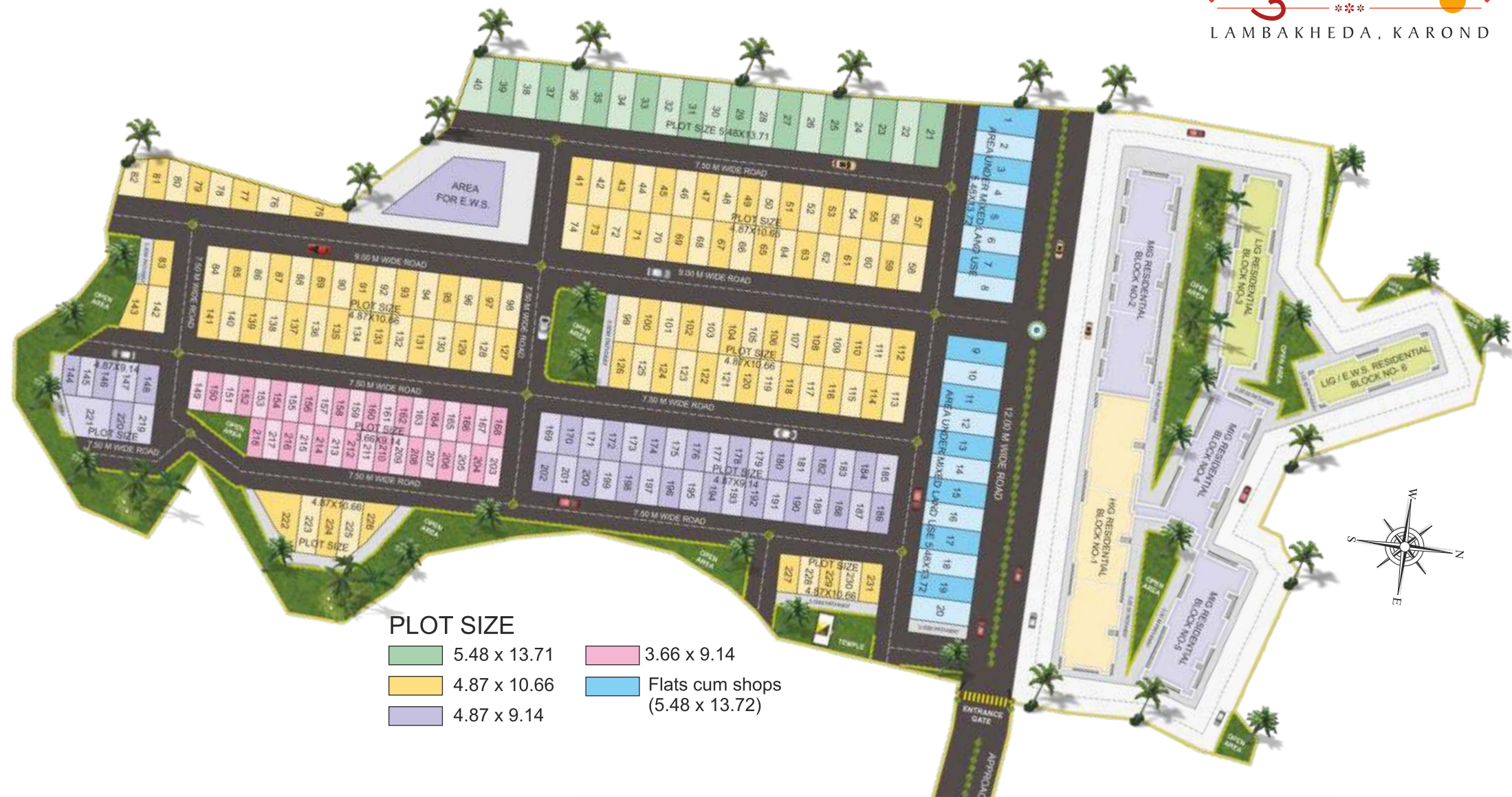
This brochure is purely conceptual & not a legal offering. All visual photographs used in this brochure are artists impressions. All specifications, sizes & layout etc. are tentative & subject to such variations, additions, modifications as decided by the Architects or by the Promoters.



शहर के बीचों बीच आपके सपनों का घर...







### Other running projects

- Himanshu Mega City , Mandideep
- Himanshu Greens, Kolar Road, Bhopal
- Himanshu Wings, Mandideep
- Himanshu Sheetal Tower, Lalghati

### Upcoming projects

- Himanshu Heights, Karond





## SURPRISE YOURSELF WITH A SUMPTUOUS LIFESTYLE

Not just better, expect more than that; and your expectations will be honored here, for sure. Himanshu Shubh City is an avant-garde township with features and facilities beyond your imagination.

If you ever wish to take a voyage of extremely lush and luxurious residential campus, visit Himanshu Shubh City. Here, a huge and stunning entrance gate will surprise you with its beauty the moment you enter the campus. And the train of surprises will continue to persist when you roam into the campus. Be it greenery, comfort and convenience or project planning Himanshu Shubh City is surprisingly perfect at every aspect.

### Project Highlights

- Grand entrance gate with security room.
- Approved by all Government authorities.
- Natural light in every room.
- Vastu oriented layout planing.
- Round-the-clock security.
- Adequate water supply.
- Underground electrification.
- Beautiful landscaped gardens, Jogging tracks with children play area.
- Secure area for senior citizens.
- Wide paved road with beautiful street lights.
- Loan Facility available.

### Convenience & connectivity

- International airport at just 10 min drive.
- Highway at just 2 min drive.
- Shopping malls at just 2 min drive.
- Schools & Colleges at just 2 min drive.
- Hospitals at just 2 min drive.
- Railway station at just 10 min drive.
- M.P. Nagar at just 10 min drive.



18 x 45 DUPLEX 3D VIEW



PRAMOD JAIN'S  
**HIMANSHU**  
**॥ शुभ सिटी ॥**  
LAMBAKHEDA, KAROND

## Specifications

Structure - R.C.C. Framed structure, designed for earth quake resistance.  
Walls - First Class Brick Masonry.  
Kitchen - Green Marble Platforms & Stainless steel sink, Glazed Ceramic tiles upto 1 ½ ft. ht above platform.  
Garden - Developed Garden in campus  
Flooring - Ceramic tiles inside, anti skid tiles in Toilet & Wash Area.  
Toilet - Designer tiles up to 5' ht. matching sanitary tiles, chrome plated good quality fitting.

Openings- Door Frames in Dewas Section with factory made flush doors/or best quality MDF doors. Powder coated Aluminum sliding windows / or UPVC windows with iron grill Best quality.  
Electrification - Concealed wiring with sufficient points and circuit security through M.C.B.'s.  
Water Supply - Tube well for water supply through sump well.  
Painting - Best quality weather-proof exterior paint on external walls, best quality emulsion on internal walls, oil paint on grills.

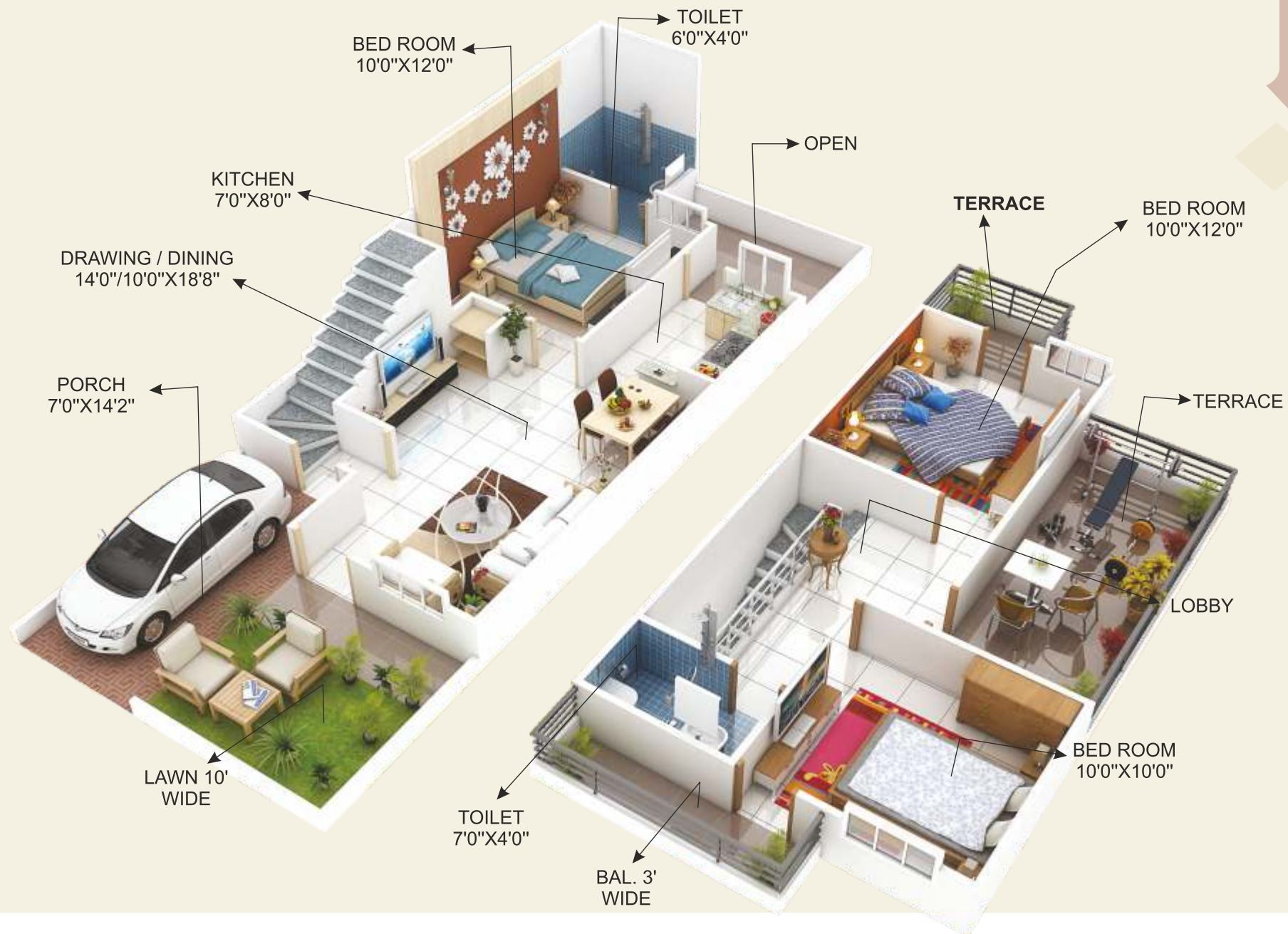


1BHK Floor Plan



Super Builtup area - 650 sq.ft.

3 BHK DUPLEX 3D FLOOR PLAN



Plot Size - 18' x 45' | Plot Area - 810 sq.ft. | Super Builtup Area - 1300 sq.ft.





2BHK Floor Plan



Super Builtup area - 900 sq.ft.



## PARKING VIEW



TURN YOUR LIFE  
INTO A CELEBRATION  
THAT NEVER COMES  
TO AN END



Here at Himanshu Shubh City, we left no stone unturned to make it a fun-filled place. Just be here, whether you stay at home or roam around in campus you will discover uncountable reasons to celebrate your presence. Every single moment you are going to spend here would be filled with incessant festivity.

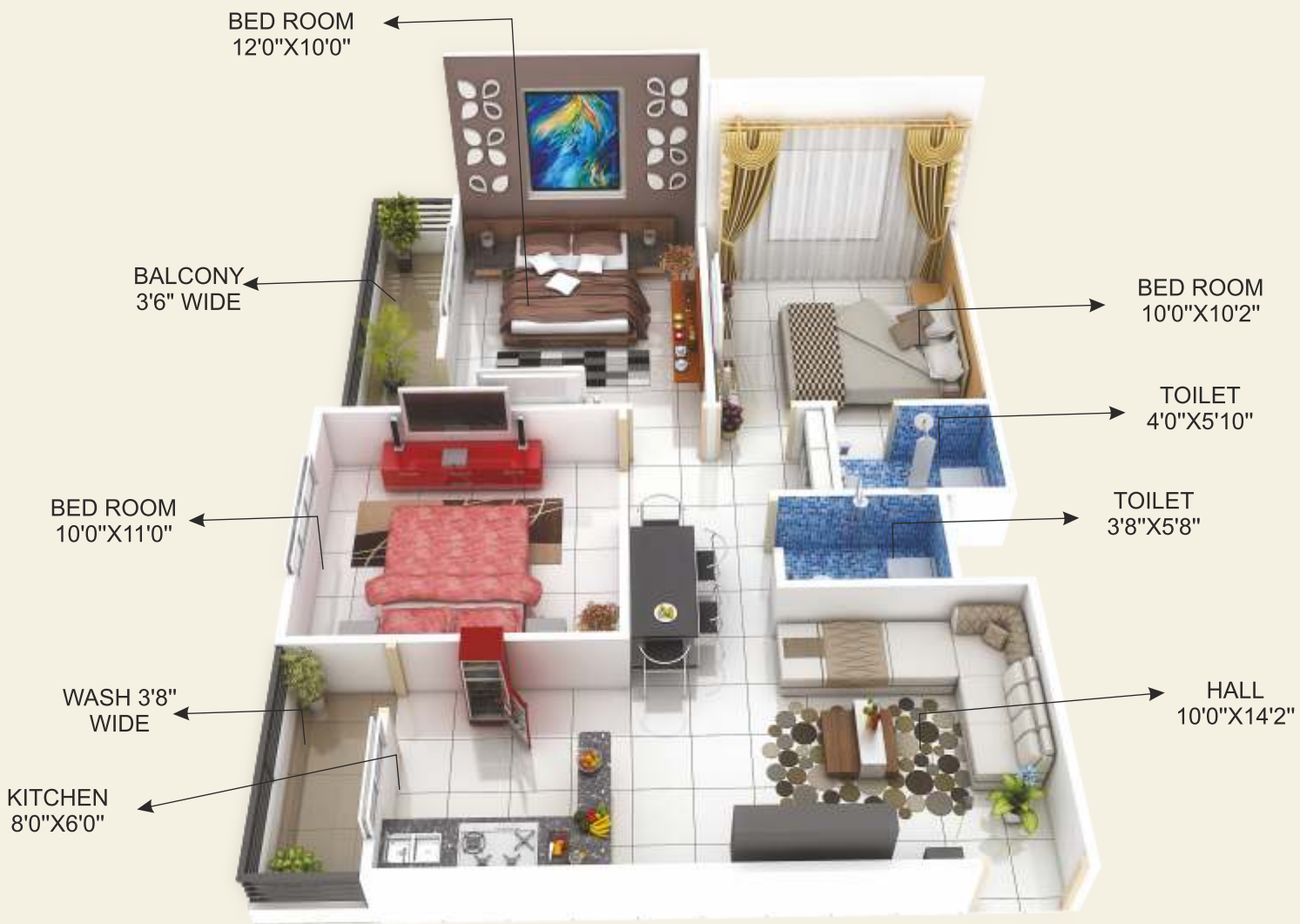
In addition to this, we have various other sports facilities, a special treat to the fun lovers and fitness freaks.



3 BHK DUPLEX 3D FLOOR PLAN



3BHK Floor Plan

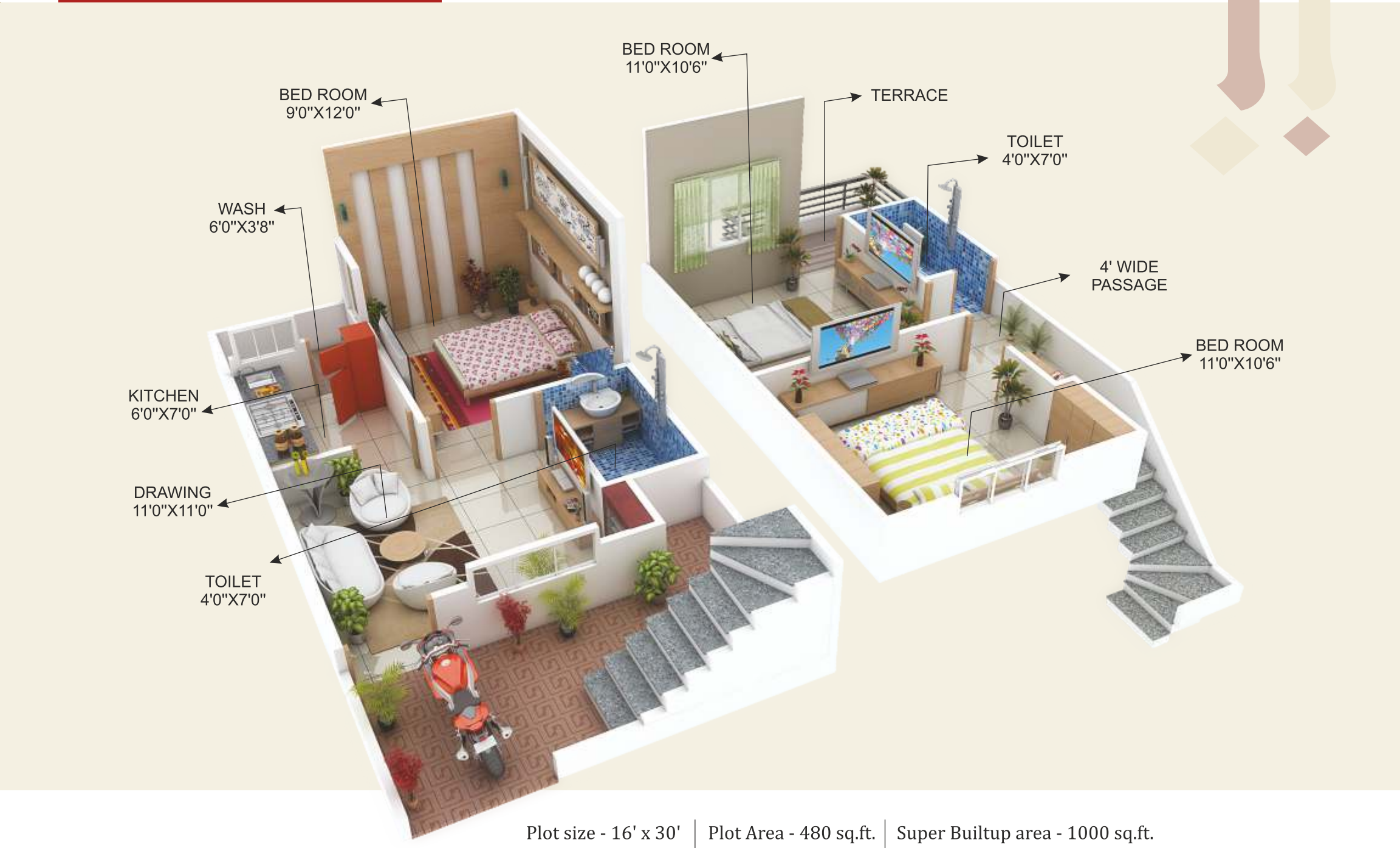




MULTI FRONT VIEW



3 BHK DUPLEX 3D FLOOR PLAN





12 x 30 DUPLEX 3D VIEW



1 BHK DUPLEX 3D FLOOR PLAN



Plot size - 12' x 30' | Plot Area - 360 sq.ft. | Super Builtup area - 780 sq.ft.