

Developers



Trade Avenue, 5th floor, Suren Road, Near Highway  
Andheri (E), Mumbai 400093, India  
Tel No. 2683 6357, Fax: 2683 4320  
E mail: sales@atulprojects.com  
marketing @atulprojects.com  
Web : www.atulprojects.com



Premium *lifestyles* For the Fortunate few



# *Visualise*

*Give a free rein to your Imagination*



Make a wish-list. Think of the best possibilities for your home. Think of the most convenient location. Imagine top-of-the line amenities and finishes. Consider the most contemporary lifestyle solutions.

*Then think **Blue** Fortuna,  
It's all that you desired!*

*Every Dream is valued...*

At Atul Projects, your dreams are our reality.



Blue Fortuna is an iconic project that offers a complete lifestyle. With an enviable access, Blue Fortuna stands tall with roads on both sides of it. It has shopping spaces at the ground level, with plenty of parking in the podiums and basement. With well planned flats in an elegantly planned layout, Blue Fortuna is a statement about all that is dear to you.



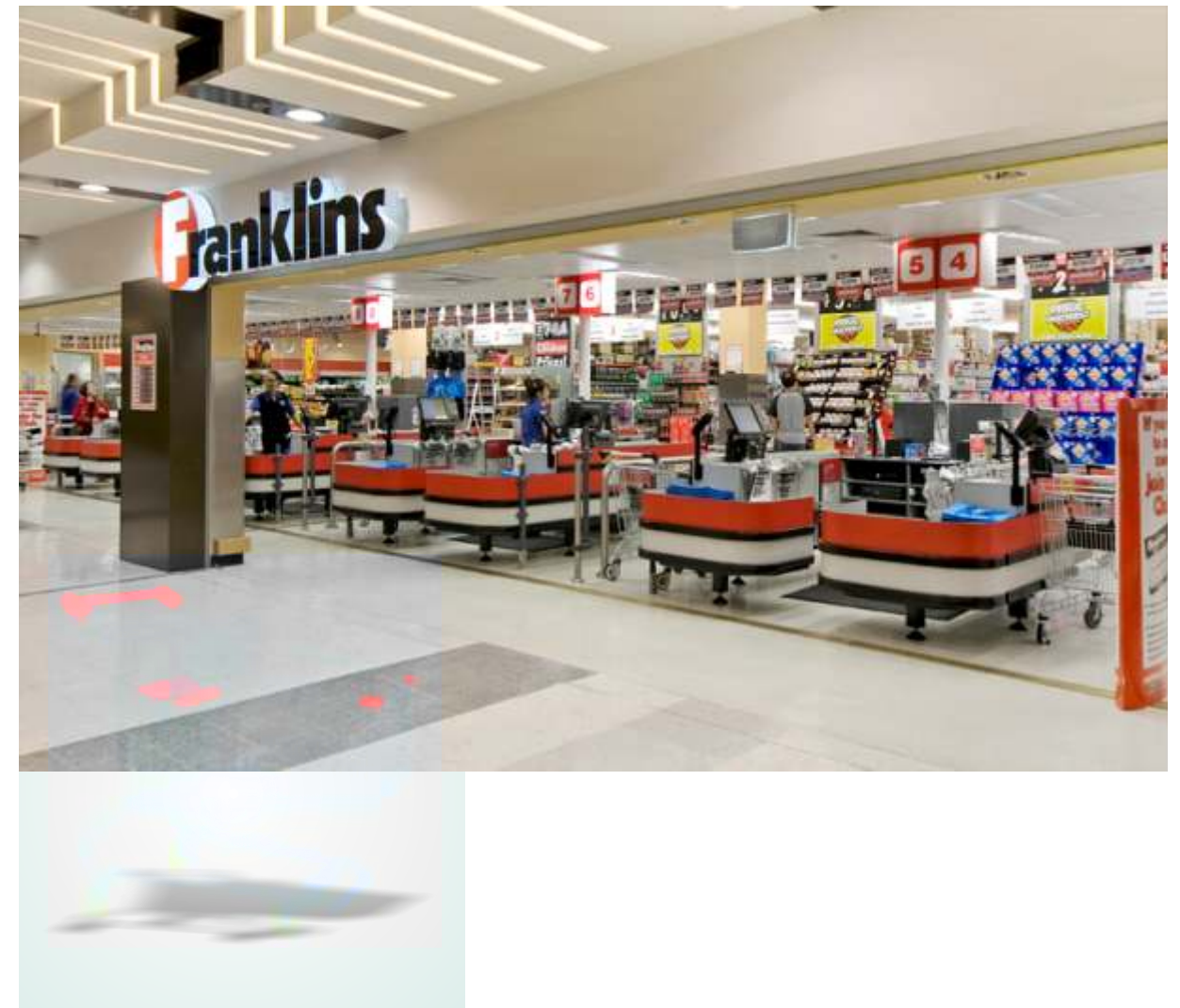


*Dreams brought to Life*





*The future perfect  
Opportunity*



Located in the proximity of Metro Station Andheri, Andheri Kurla Road, "Blue Fortuna" truly makes for a perfect commercial space. With 2 levels of exclusive commercial spaces and in vicinity of the elite class, you are all set for the business mood!



## *Amenities*

BLUE FORTUNA is a well planned, spacious & premium Residential project. Each and every amenity at BLUE FORTUNA has a valid logic. Branded fittings, fixtures and finishes lend that extra edge to the already plush spaces. State-of-the-art security features keep you secure and at peace. Well laid out green spaces, fully equipped health facilities and thoughtful traffic planning, all complete the definitions of elite living.



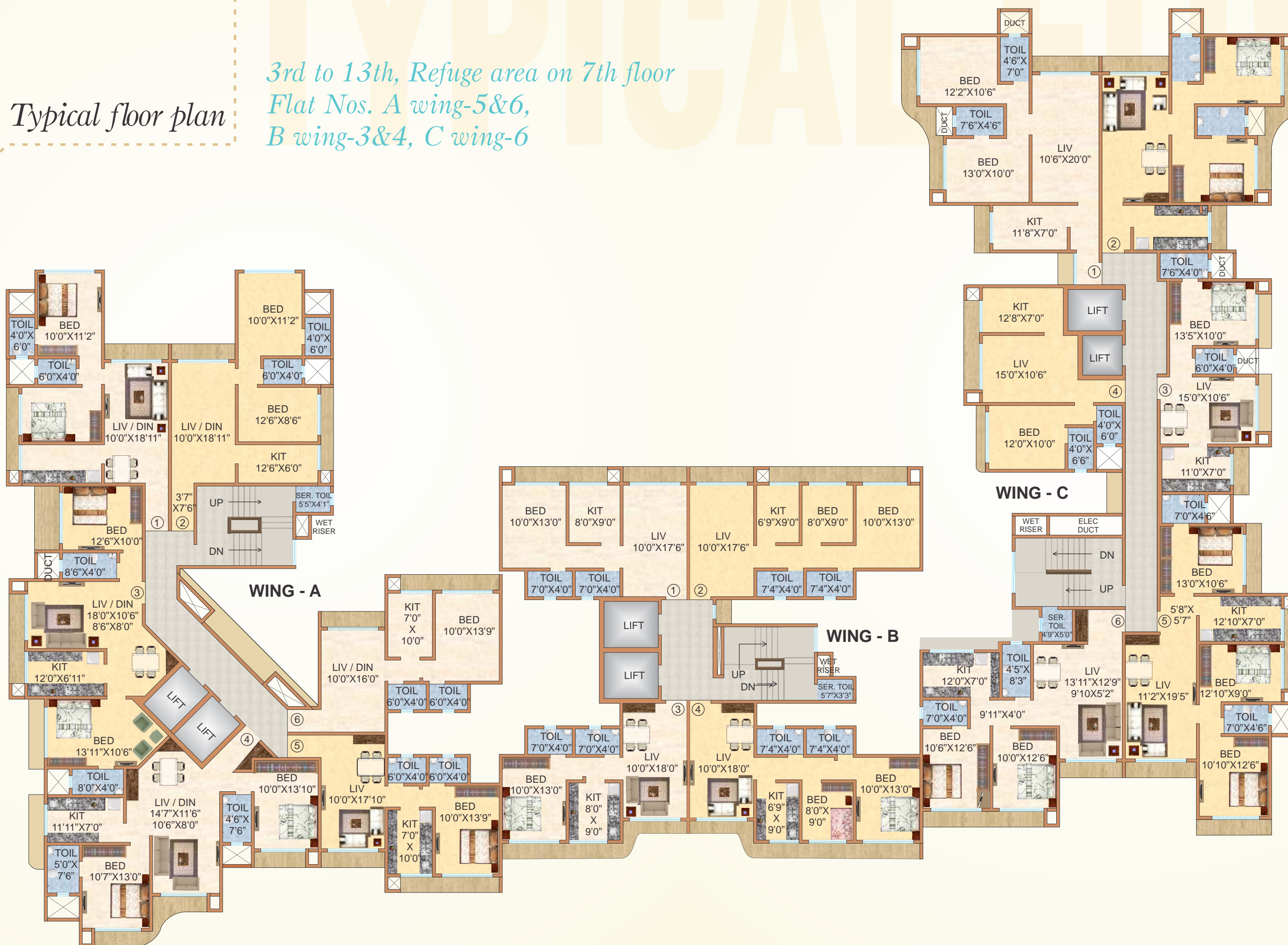
shaping of your *Dreams*



# TYPICAL FLOOR

3rd to 13th, Refuge area on 7th floor  
Flat Nos. A wing-5&6, B wing-3&4, C wing-6

Typical floor plan



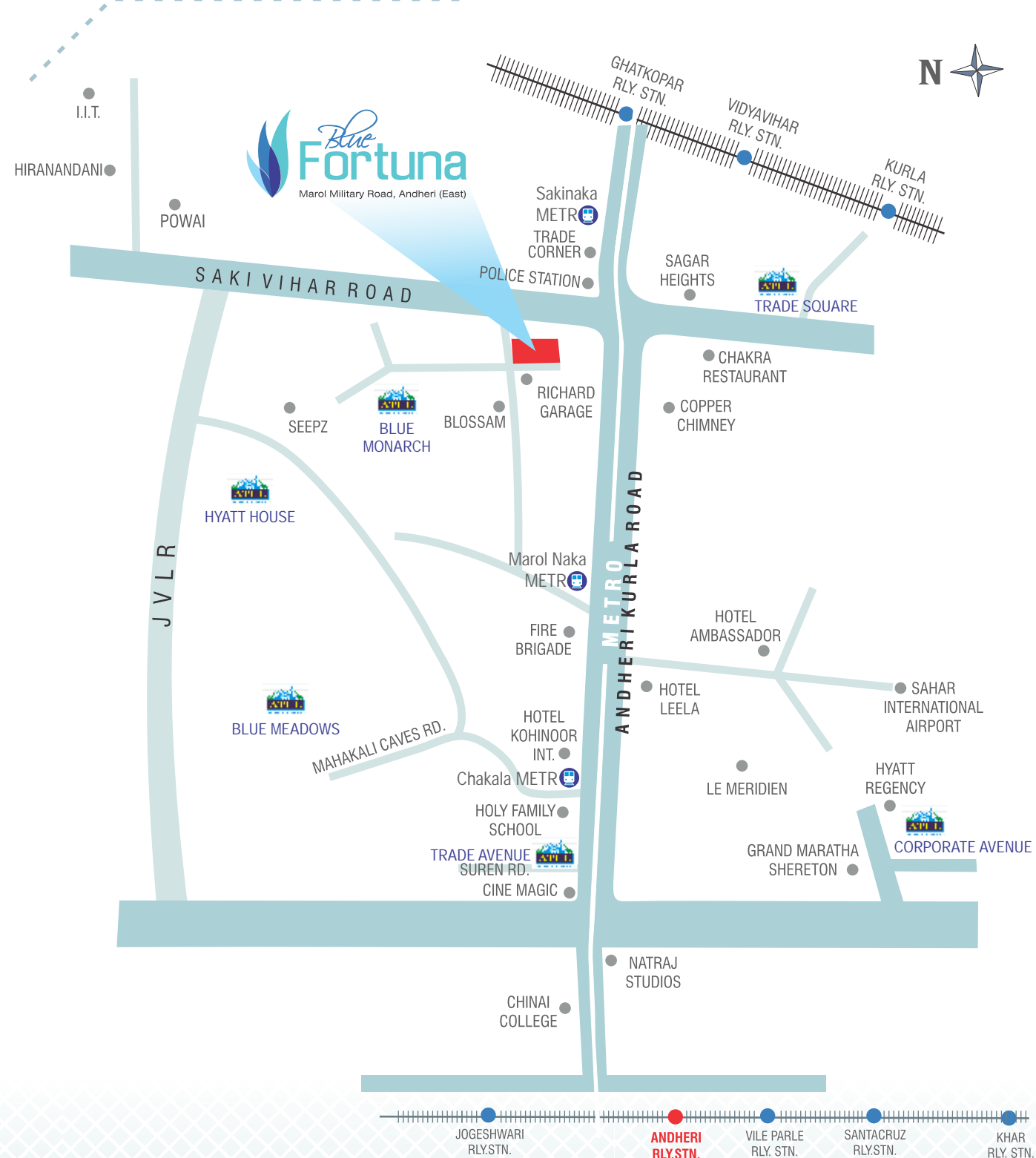






# LOCATION PLAN

## Location plan



## An envious Location

Placed at the very edge of the Andheri-Kurla Road & near Metro Station, accessibility is the most convenient feature at BLUE FORTUNA. Add to this the various residential complexes, shopping and commercial spaces, healthcare and educational facilities in the vicinity, and you have an address that is unforgettable. BLUE FORTUNA says it all.

### Credits

Architect  
**R. M. Zaveri & Sons**

R.C.C. Consultant  
**H. D. B. Design Services**

Consulting Architect & Interior designer  
**Sanjay N. Unarker**  
**Rajesh N. Unarker**